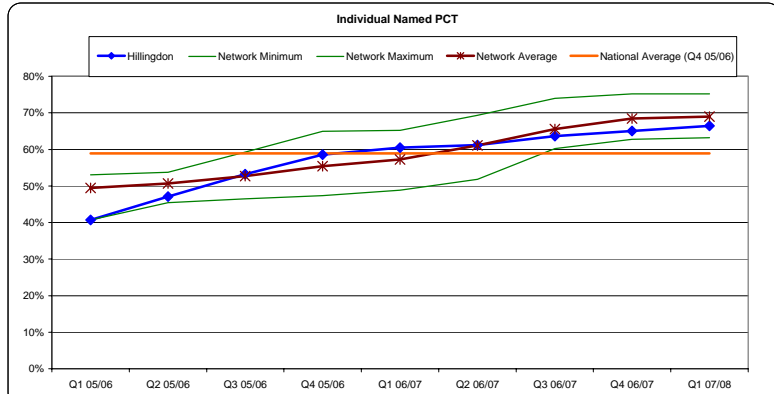


# % of Low Cost Statin Prescribing (Simvastatin & Pravastatin)

April 05 - June 2007

North West London Cardiac Network showing Hillingdon as named PCT



**Graph Description**

The data in these charts is produced by the Prescribing Support Unit. It is the data used for the Productivity Metric\*, prescribing indicator 'Increasing low cost statin prescribing'.

\*Productivity Metric is a series of 15 high-level indicators of efficiency that identify potential areas for improvement, devised and produced by the NHS Institute for Innovation and Improvement.

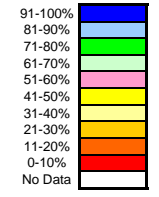
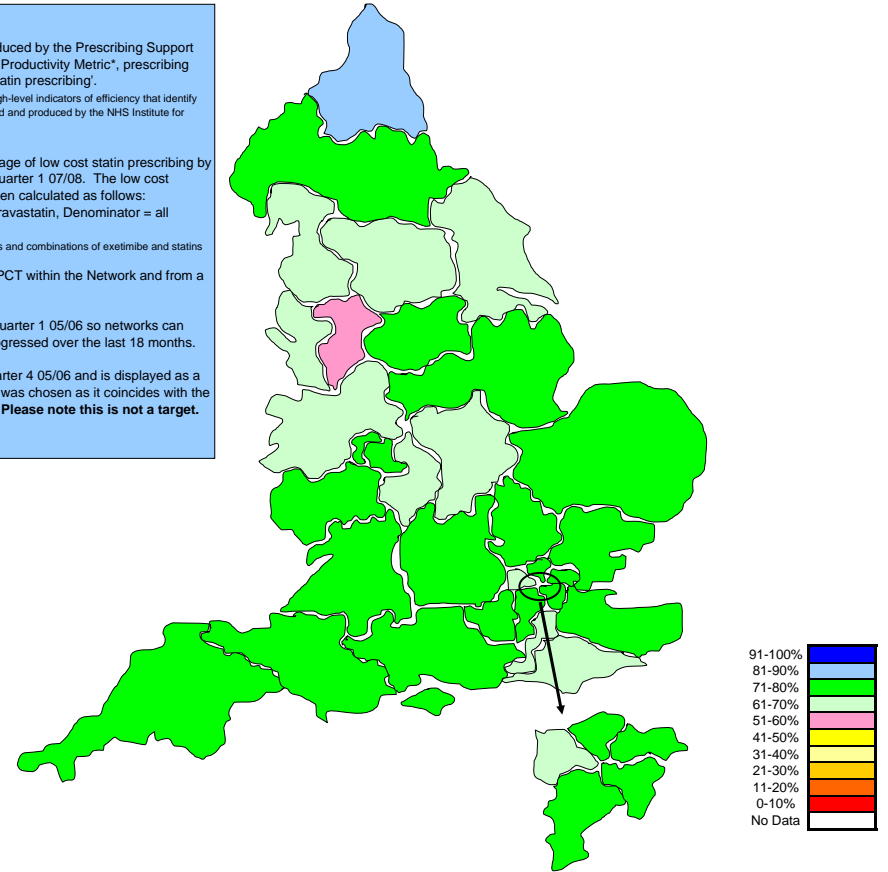
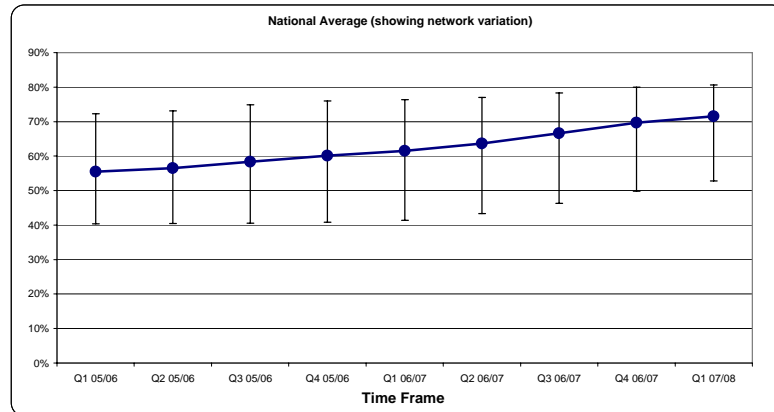
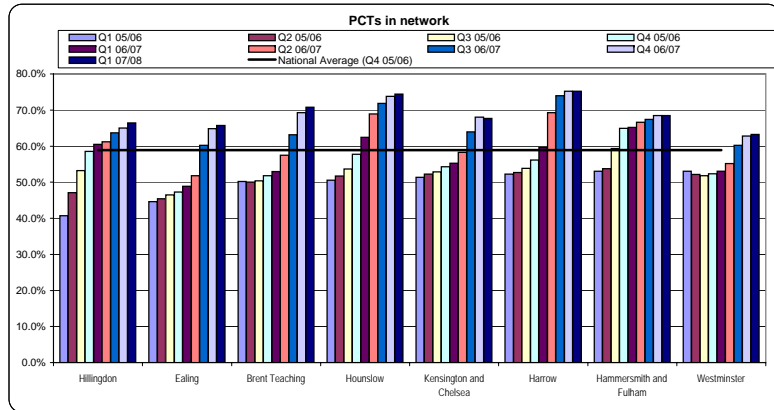
The graph displays the percentage of low cost statin prescribing by PCT from Quarter 1 05/06 to Quarter 1 07/08. The low cost prescribing percentage\* has been calculated as follows:  
 Numerator = simvastatin and pravastatin, Denominator = all statins.

\*Excludes all other lipid regulating drugs and combinations of ezetimibe and statins

It highlights the position of the PCT within the Network and from a National Perspective.

The data has been sorted by Quarter 1 05/06 so networks can identify how the PCTs have progressed over the last 18 months.

The national average is for Quarter 4 05/06 and is displayed as a line at 58.9%. Quarter 4 05/06 was chosen as it coincides with the first Productivity Metric report. **Please note this is not a target.**



**Local Comments**