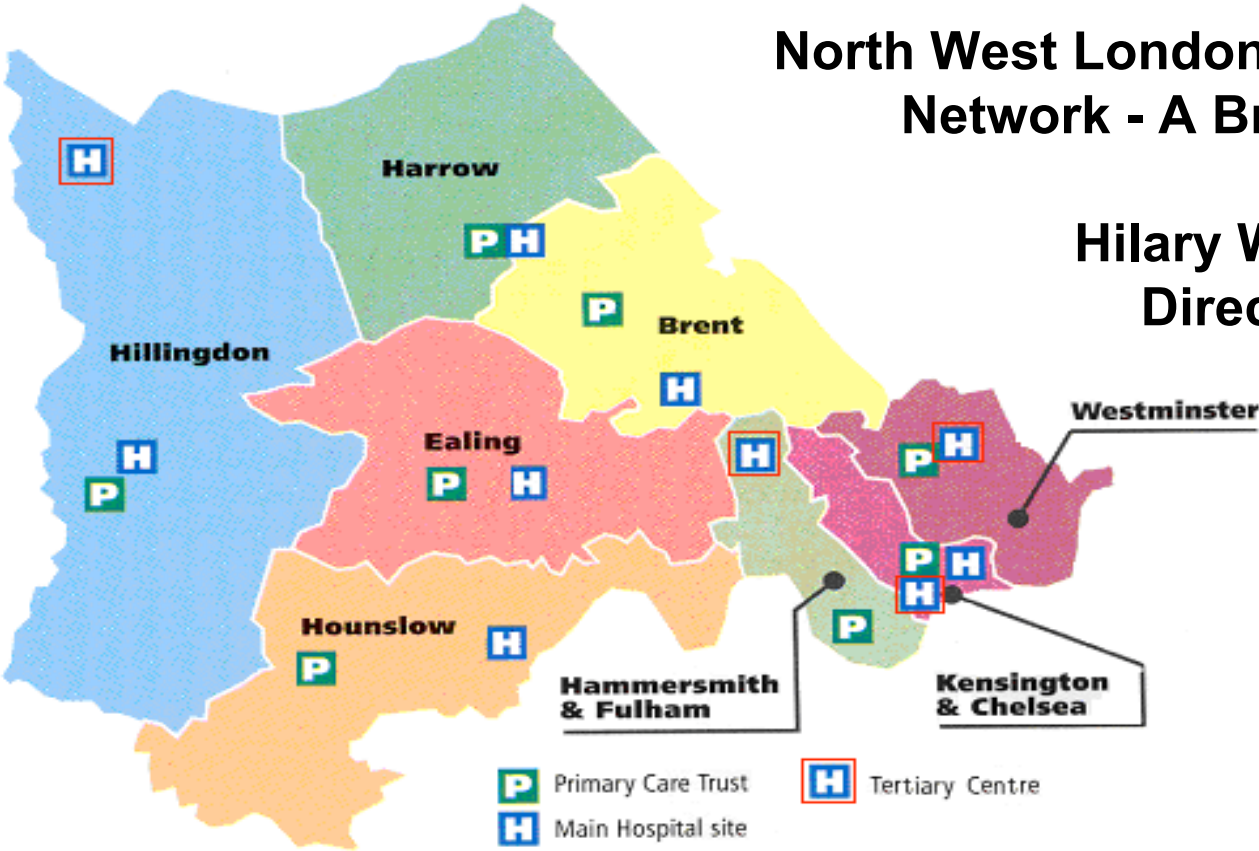




# North West London Cardiac & Stroke Network - A Brief Overview

Hilary Walker  
Director





# Our Remit

---

- Improve the experience and outcomes for people who have, or who are at risk of developing cardiovascular disease, by redesigning the patients pathway of care

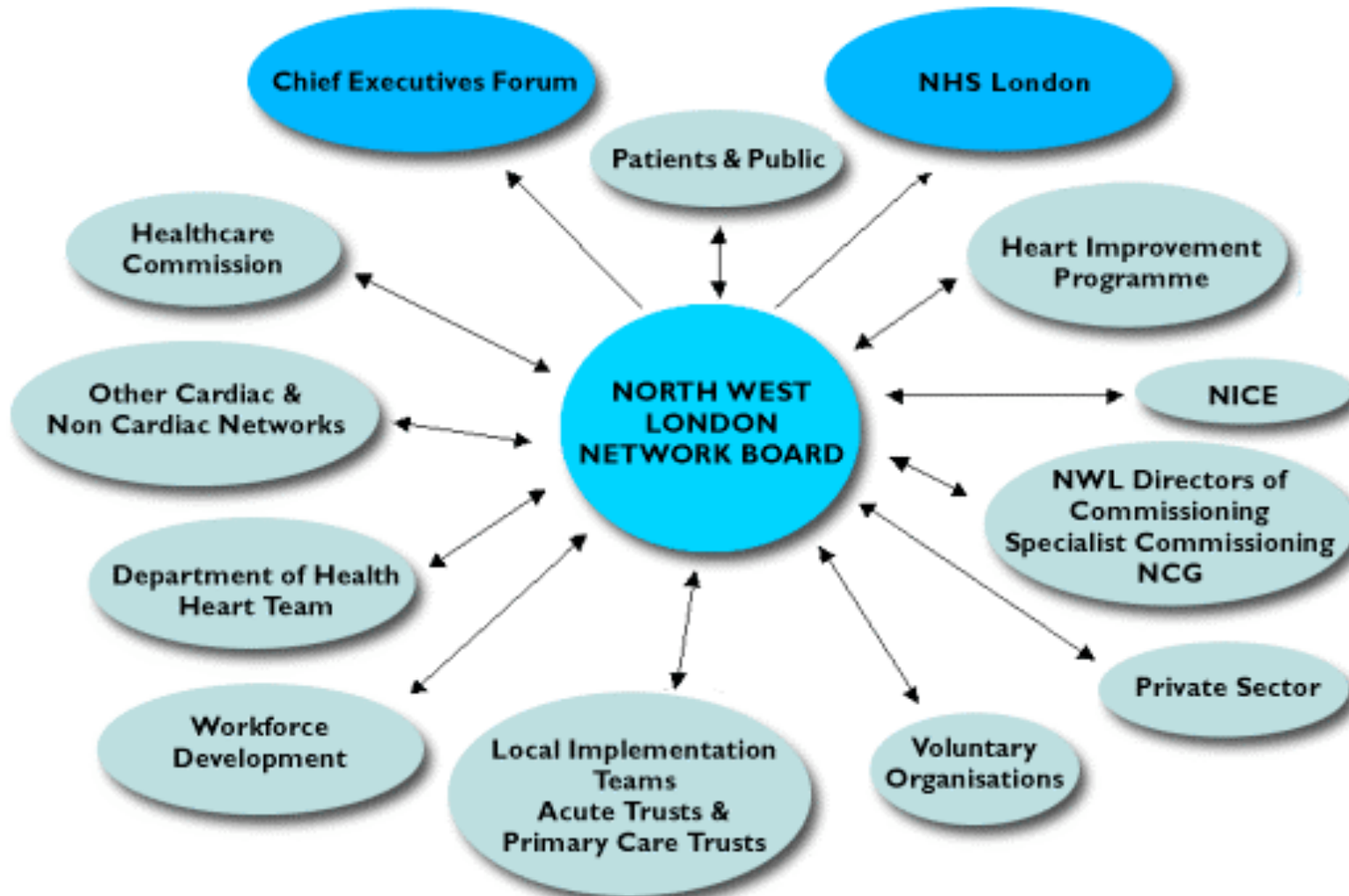
## Work-streams:

- Primary Care
- Revascularisation
- Arrhythmia and Sudden Death Syndrome
- Heart Failure
- Cardiac Surgery
- Cardiac Rehabilitation
- End of Life
- Stroke





# Key Network Links





# Benefits of working with Networks

---

- Engagement with clinicians, managers and commissioners across a large geography to assess how well the whole system is working and to make the necessary changes to deliver improvements
- Expose inequities in treatments or access and provide framework to address these
- Ability to plan services and improvements from the perspective of the patient
- Improve the quality of local commissioning by advising where best to place resources to maximise benefit for patients





# Benefits of working with Networks

---

- Advise on the appropriate implementation of national policy, research, and best practice across health economies
- Support organisations on delivery of key cardiovascular targets
- Provision of expert advice and information to assess current services, highlight strengths and limitations and identify changes needed to support redesign of the patient pathway

